



INDOFINE Chemical Company, Inc.

121 Stryker Lane, Bldg. 30, Suite 1 • Hillsborough, NJ 08844 • U.S.A.

Phone: (908) 359-6778 • FAX: (908) 359-1179

website: www.indofinechemical.com

e-mail: chemical@indofinechemical.com

CERTIFICATE OF ANALYSIS

Catalog Number: 027253S

Product Name: **ALLIIN with HPLC**
((S)-3-(Allylsulfinyl)-L-alanine)

CAS Number: [556-27-4]

Lot Number: 1605829

Chemical Formula: C₆H₁₁NO₃S

Molecular Weight: 177.21

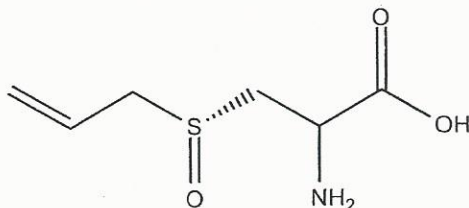
Botanical Source: Allium sativu

Appearance: Light yellow powder

Loss on drying: 1.3%

Storage: Store in a cool, dry place. Protect from light.
To be kept in a desiccator.

Purity(HPLC): 99.50%





INDOFINE Chemical Company, Inc.

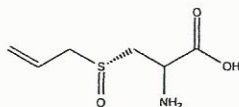
121 Stryker Lane, Bldg. 30, Suite 1 • Hillsborough, NJ 08844 • U.S.A.

Phone: (908) 359-6778 • FAX: (908) 359-1179

website: www.indofinechemical.com

e-mail: chemical@indofinechemical.com

HPLC ANALYSIS



Catalog No.: 027253S

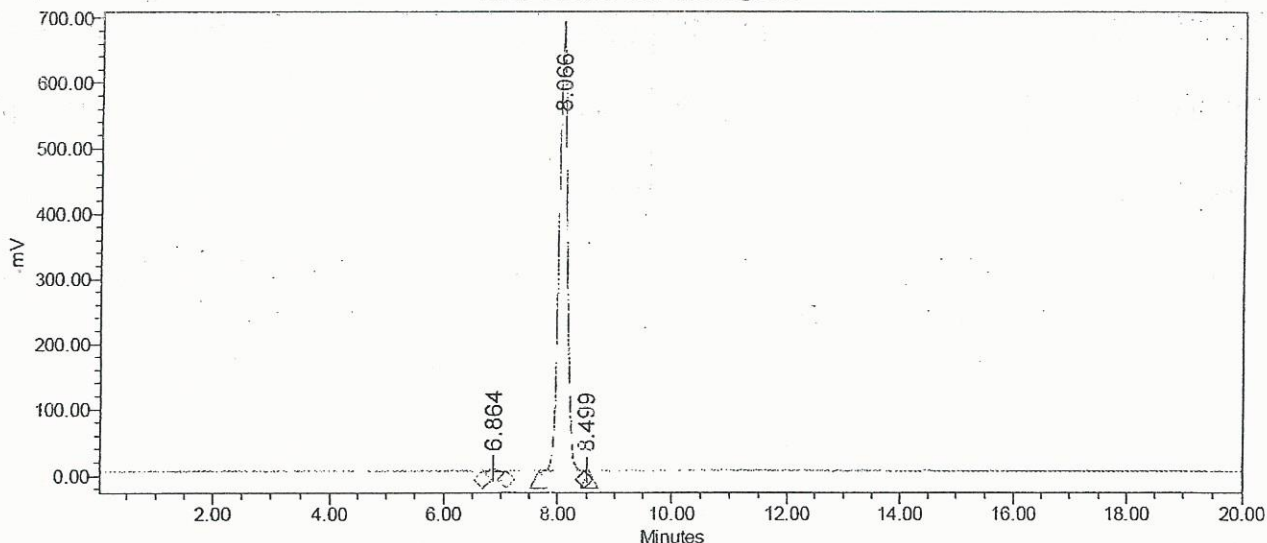
Product Name: Alliin

Lot No.: 1605829

SAMPLE INFORMATION

Sample Name:	Alliin	Acquired By:	System
Sample Type:	Unknown	Sample Set Name:	
Vial:	109	Acq. Method Set:	Alliin
Injection #:	2	Processing Method:	Samples
Injection Volume:	10.00 ul	Channel Name:	SATIN
Run Time:	20.0 Minutes	Proc. Chnl. Descr.:	

Auto-Scaled Chromatogram



Peak Results

	Name	RT	Area	% Area	USP Plate Count	USP Resolution
1		6.864	31802	0.46	17156.24	
2		8.066	6854404	99.50	14146.44	4.92
3		8.499	2509	0.04	174724.73	2.45